

# HYDROLIFT™

BORN TO LIFT

CRANE MODEL  
**875**



SAFETY

**Hx**

SAFETY

**HPS**

Inside

SAFETY

**HPro**

REMOTE

SAFETY

**HPro<sup>+</sup>**

EMS



[www.hydrolift.in](http://www.hydrolift.in)

# CRANE 875

## STRUCTURE AND FRAME

- High tensile grade steel
- High-quality steel pins and bushes

## WEATHER PROTECTION

- Zinc enriched primer for superior rust prevention
- Superior polyurethane paint
- Standard paint color RAL 3002
- Option - Another color on customer request

## DESIGN FEATURES

- European technology and design, produced in India under Make in India program
- High-quality branded components used in cranes

## SAFETY AND CONTROLS

- Cranes with **Hx** are standard cranes with no additional features
- Cranes with **HPS** have additional electronic safety features fitted with safe overload protection
- Cranes with **HPro** are installed with radio remote controls for safe remote operations
- Cranes with **HPro+** are installed with electronic safety, radio remote control and Intelligent Monitoring System along with Crane diagnostics

## HYDRAULIC POWER

- High pressure hydraulic pump
- Working Pressure 290 bar

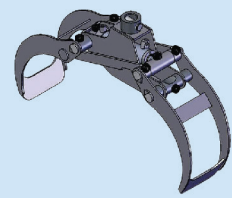
## ATTACHMENTS



AUGER



POLYGRAB



LOG GRAB



WINCH



MAN BASKET



BRICK BLOCK CLAMP

## OPTIONS



RADIO REMOTE



OIL COOLER



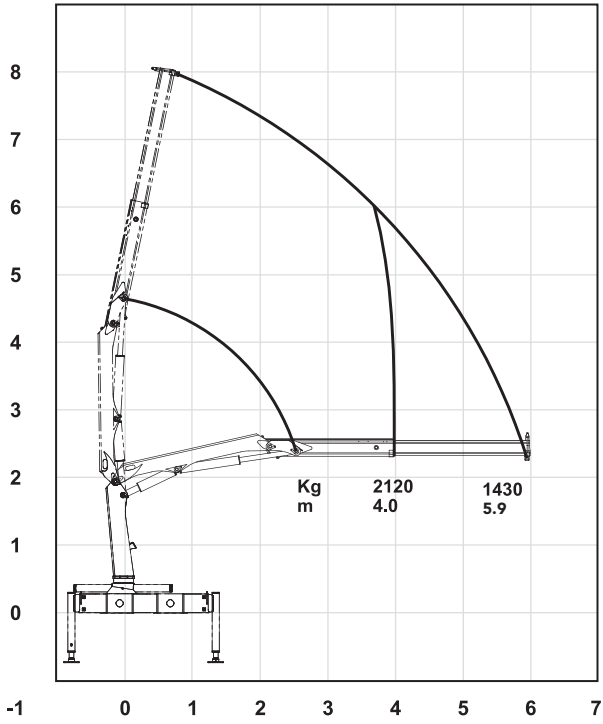
EXTRA STABILIZER



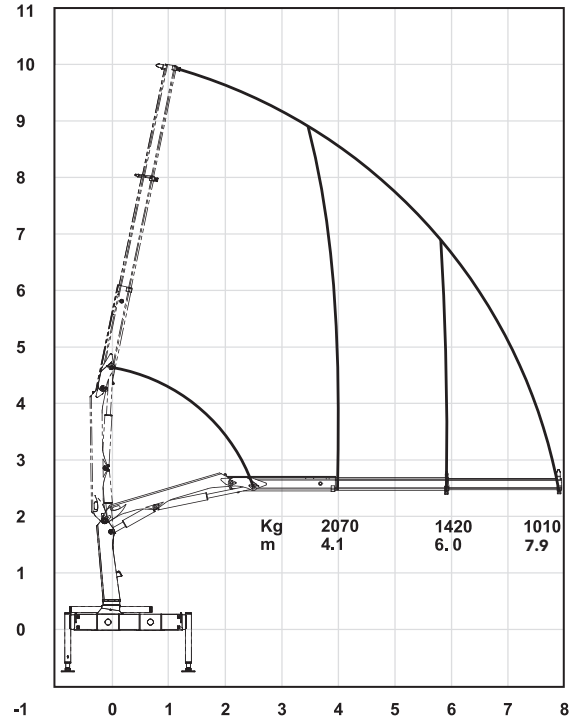
TOP SEAT

## LOAD CHART

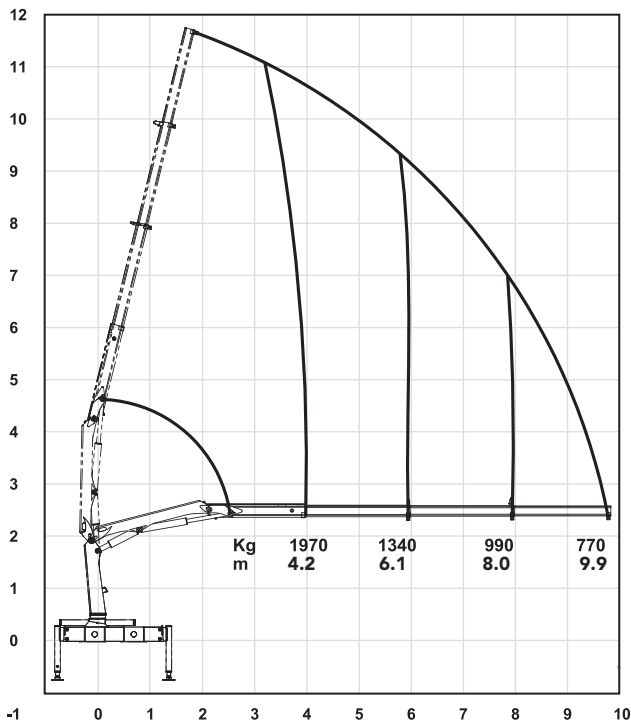
### 875 K1



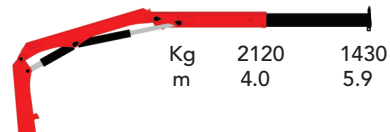
### 875 K2



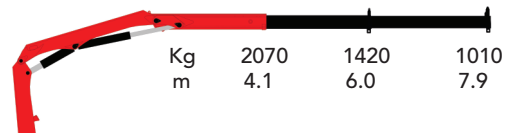
### 857 K3



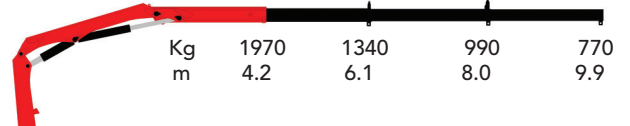
### 875 - K1



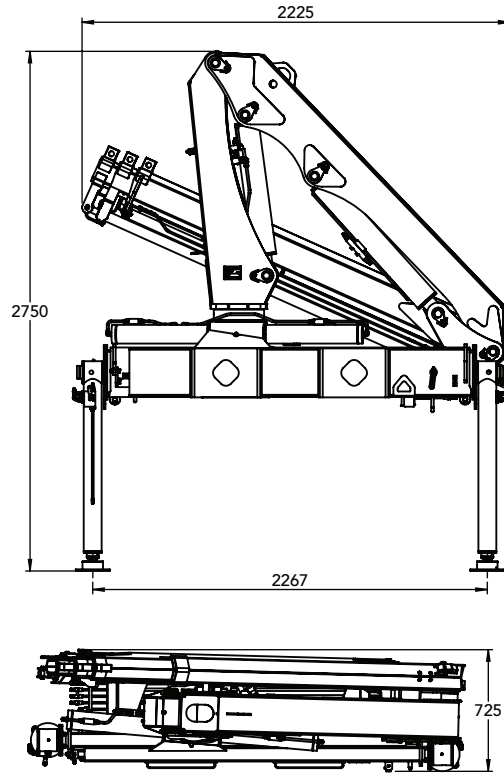
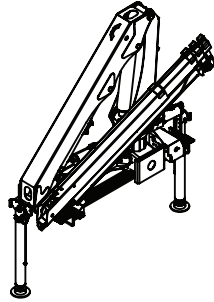
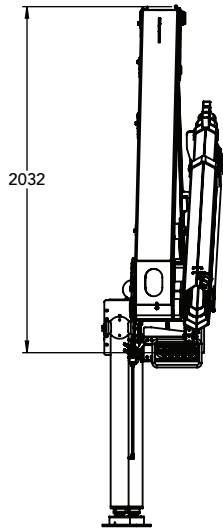
### 875 - K2



### 875 - K3



# CRANE 875



## SPECIFICATIONS

EN 12999	UNITS	K1	K2	K3
Load Movement	tm	8.5	8.4	8.3
Hydraulic Reach	m	6.0	7.8	9.8
Load Lifting Capacity	kg-m	2120 @ 4.0 1430 @ 5.9	2070 @ 4.1 1420 @ 6.0 1010 @ 7.9	1970 @ 4.2 1340 @ 6.1 990 @ 8.0 770 @ 9.9
Slewing Angle	Degree (°)	400	400	400
Slewing Torque	Kg-m	925	925	925
Height above Chassis when folded	mm	2032	2032	2032
Width when folded	mm	725	725	725
Length when folded	mm	2225	2365	2440
Stabilizer spread, Standard	mm	3300	3300	3300
Stabilizer spread, Extra long	mm	4600	4600	4600
Standard weight	Kg	1140	1220	1300
Working pressure	bar	290	290	290
Oil Flow	l/min	34	34	34
Oil Tank	Ltr	80	80	80

© Hydrolift Cranes Pvt. Ltd. Specifications and dimensions are subject to change without notice. Please verify before finalization.

### HYDROLIFT CRANES PRIVATE LIMITED

Bldg. No. 322/2, Moje Kalote Mokashi, Old Mumbai - Pune Highway, Taluka: Khalapur,  
Dist.: Raigad, Maharashtra - 410 206, India | Email: info@hydrolift.in

Dealer