

# HYDROLIFT™

BORN TO LIFT

T-CRANE

131, 232, 333, 444



SAFETY

**Hx**

SAFETY

**HPS**

Inside

SAFETY

**HPPro**

REMOTE

SAFETY

**HPPro<sup>+</sup>**

EMS

[www.hydrolift.in](http://www.hydrolift.in)





# T-CRANE

## STRUCTURE AND FRAME

- High tensile grade steel
- High-quality steel pins and bushes

## WEATHER PROTECTION

- Zinc enriched primer for superior rust prevention
- Superior polyurethane paint
- Standard color RAL 3002
- Option - Other colors on customer request

## DESIGN FEATURES

- European technology and design, produced in India under Make in India program
- High-quality branded components used in cranes

## SAFETY AND CONTROLS

- Cranes with **Hx** are standard cranes with no additional features
- Cranes with **HPS** have additional electronic safety features fitted with safe overload protection
- Cranes with **HPro** are installed with radio remote controls for safe remote operations
- Cranes with **HPro+** are installed with electronic safety, radio remote control and Intelligent Monitoring System along with Crane diagnostics

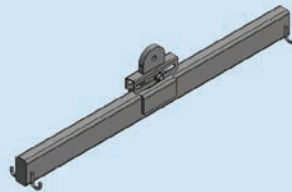
## HYDRAULIC POWER

- High pressure hydraulic pump
- Working pressure 190 bar

## ATTACHMENTS



AUGER



BIKE LIFTING ATTACHMENT



WINCH



PERSONAL BASKET

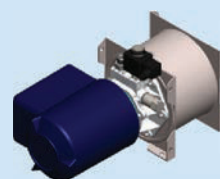


CLAMSHELL BUCKET

## OPTIONS



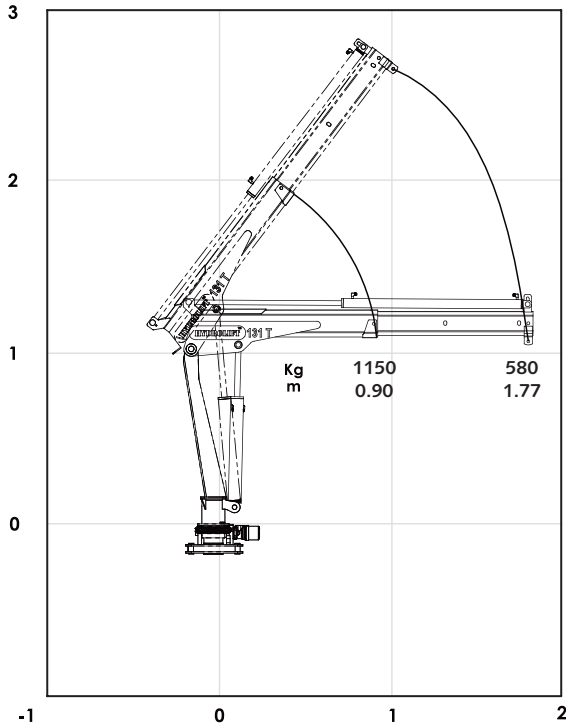
RADIO REMOTE CONTROL



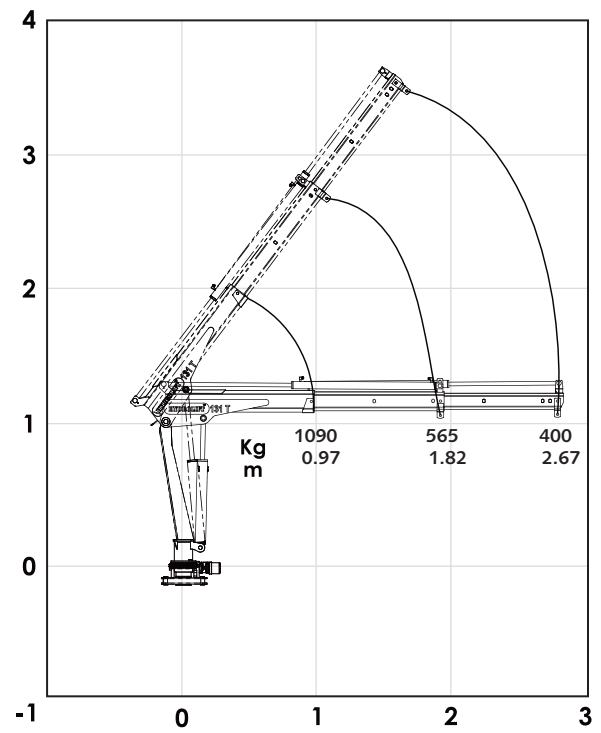
POWERPACK

## LOAD CHART

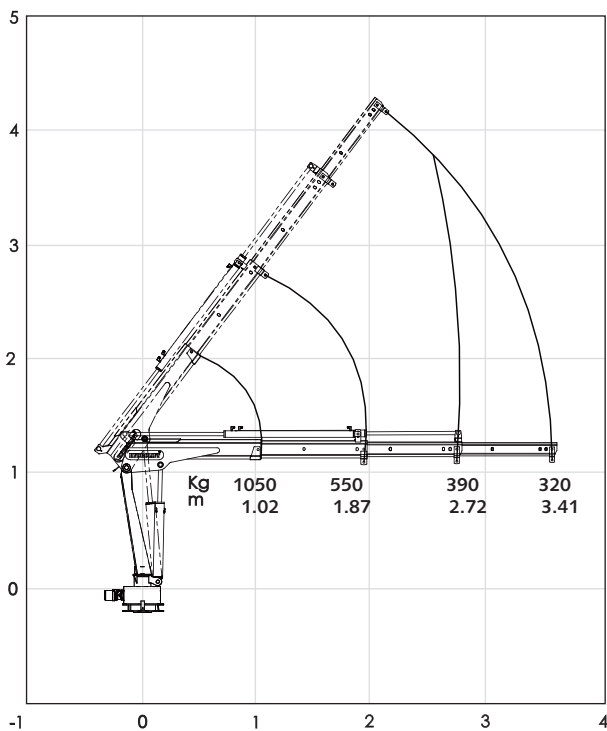
### 131 T1



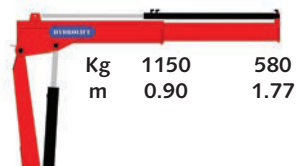
### 131 T2



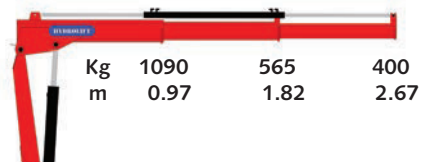
### 131 T3



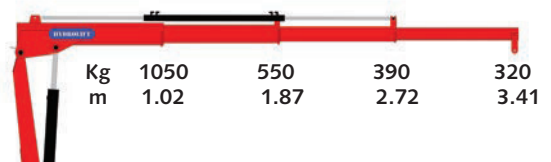
### 131 - T1



### 131 - T2

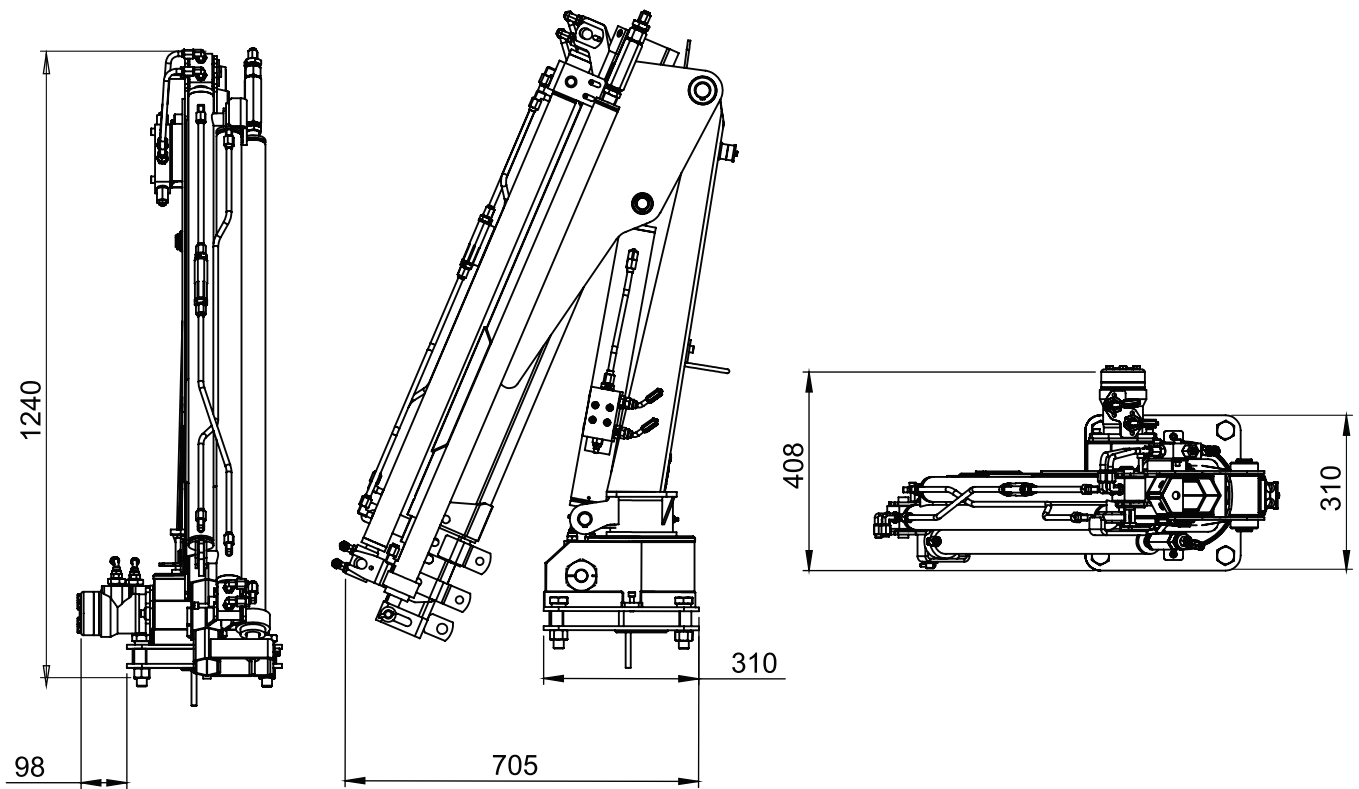


### 131 - T3





# CRANE 131

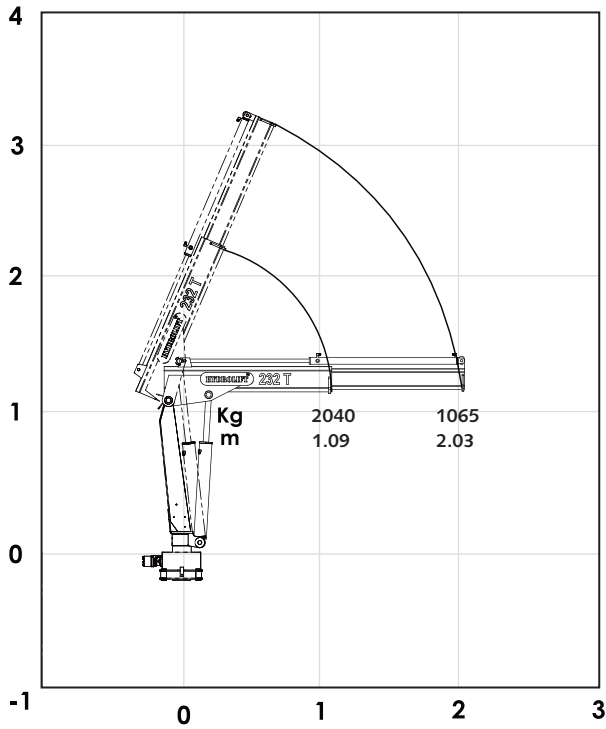


## SPECIFICATIONS

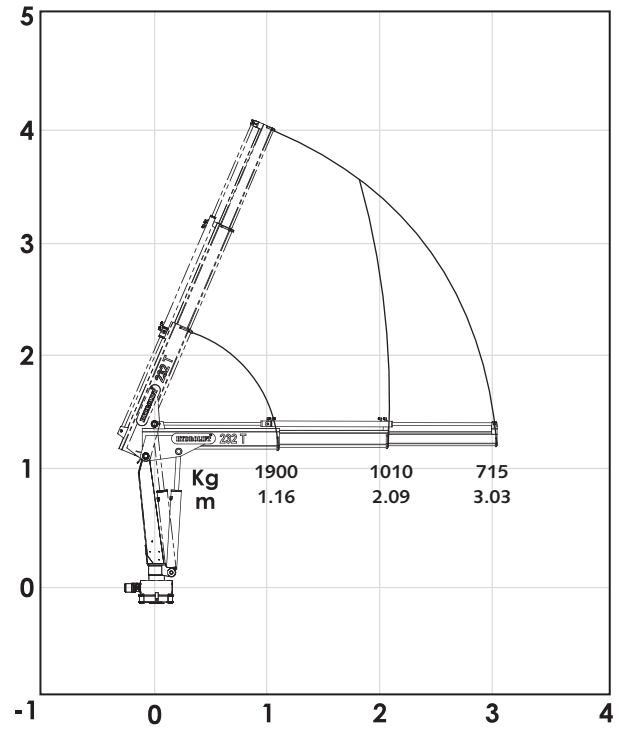
EN 12999	UNITS	T1	T2	T3
Load Movement	tm	1.2	1.2	1.2
Hydraulic Reach	m	1.77	2.67	3.41
Load Lifting Capacity	kg-m	1150 @ 0.90 580 @ 1.77	1090 @ 0.97 565 @ 1.82 400 @ 2.67	1050 @ 1.02 550 @ 1.87 390 @ 2.72 320 @ 3.41
Slewing Angle	Degree (°)	340	340	340
Slewing Torque	kg-m	320	320	320
Height above Chassis when folded	mm	1240	1240	1240
Width when folded	mm	408	408	408
Length when folded	mm	705	705	705
Stabilizer spread, Standard	mm	2360	2360	2360
Stabilizer spread, Extra long	mm	3600	3600	3600
Standard weight	kg	190	205	221
Working pressure	bar	190	190	190
Oil Flow	l/min	6	6	6
Oil Tank	Ltr	15	15	15

## LOAD CHART

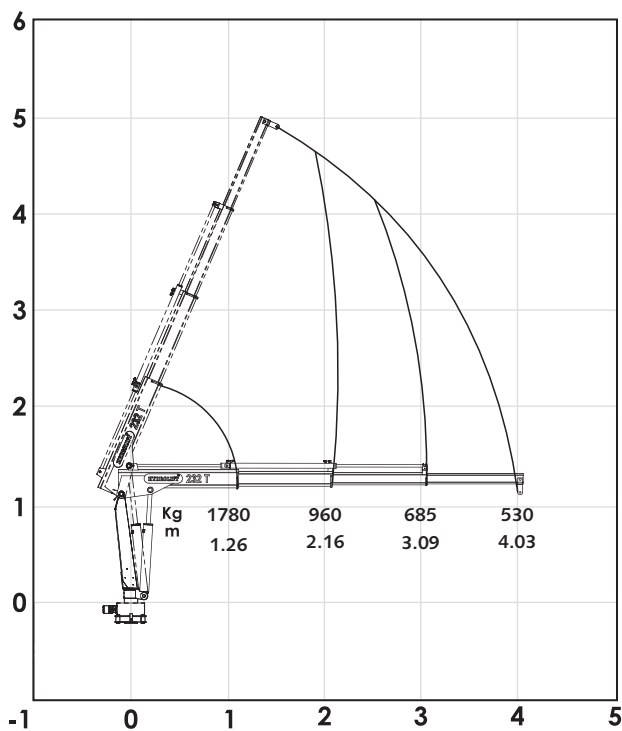
### 232 T1



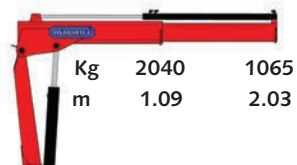
### 232 T2



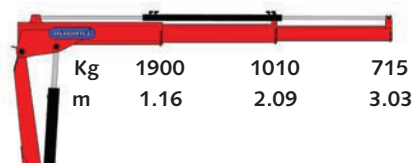
### 232 T3



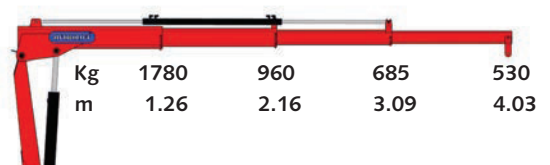
### 232 - T1



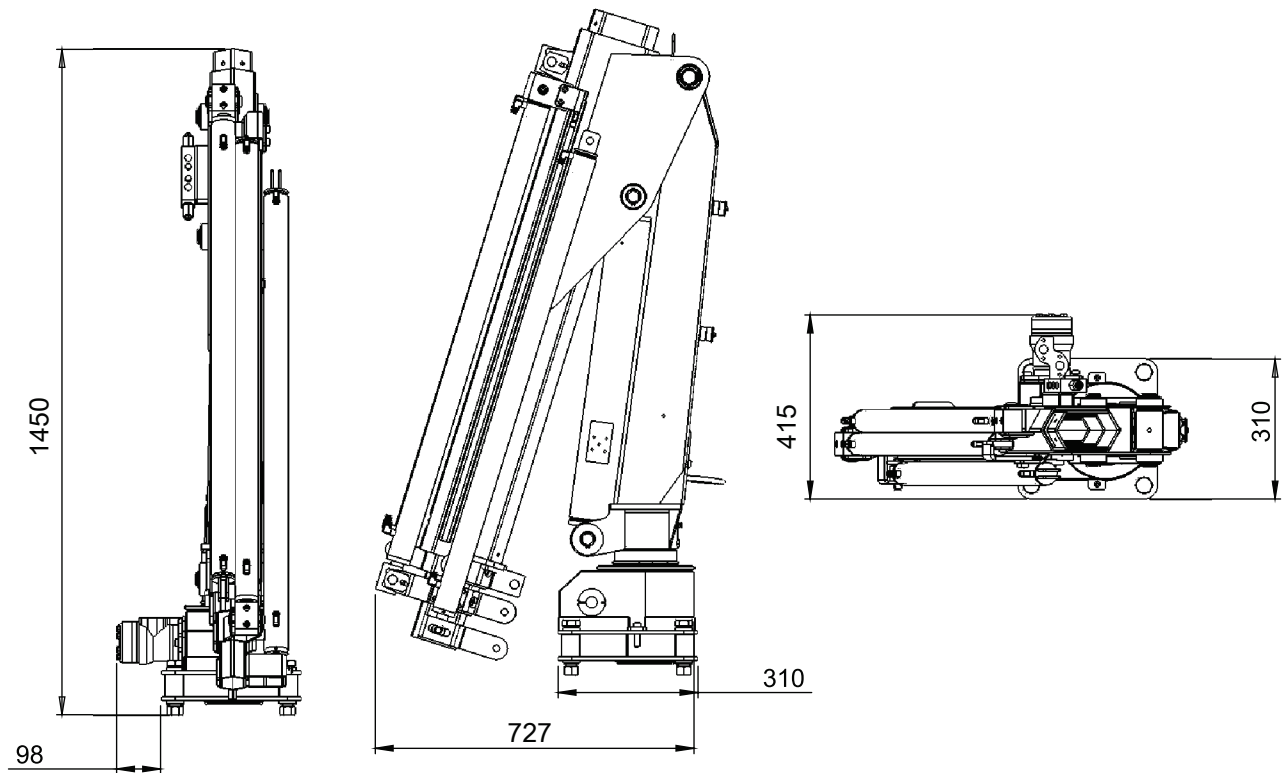
### 232 - T2



### 232 - T3



# CRANE 232

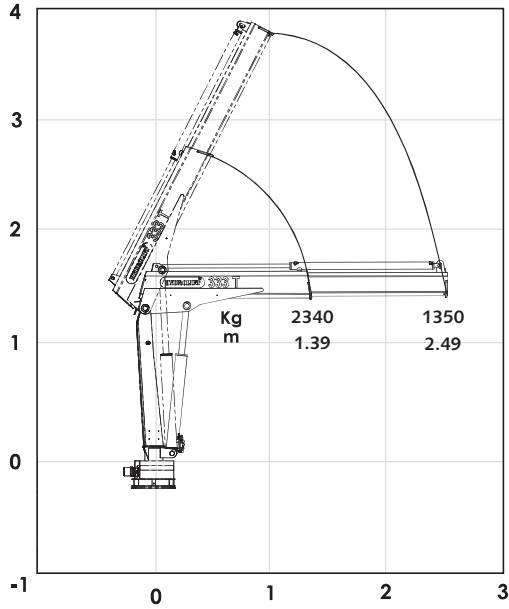


## SPECIFICATIONS

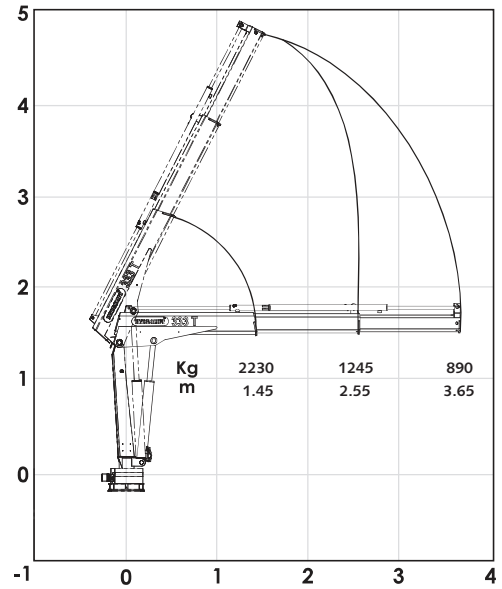
EN 12999	UNITS	T1	T2	T3
Load Movement	tm	2.3	2.3	2.3
Hydraulic Reach	m	2.0	3.0	4.0
Load Lifting Capacity	kg-m	2040 @ 1.09 1065 @ 2.03	1900 @ 1.16 1010 @ 2.09 715 @ 3.03	1780 @ 1.26 960 @ 2.16 685 @ 3.09 530 @ 4.03
Slewing Angle	Degree (°)	340	340	340
Slewing Torque	kg-m	320	320	320
Height above Chassis when folded	mm	1450	1450	1450
Width when folded	mm	415	415	415
Length when folded	mm	711	727	727
Stabilizer spread, Standard	mm	2300	2300	2300
Stabilizer spread, Extra long	mm	3600	3600	3600
Standard weight	kg	217	235	251
Working pressure	bar	190	190	190
Oil Flow	l/min	6	6	6
Oil Tank	Ltr	15	15	15

## LOAD CHART

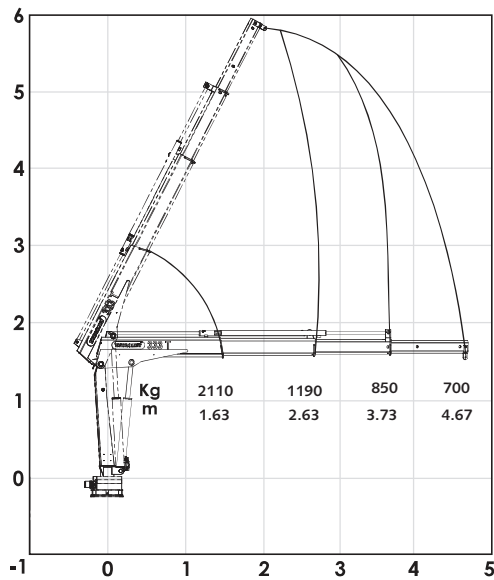
### 333 T1



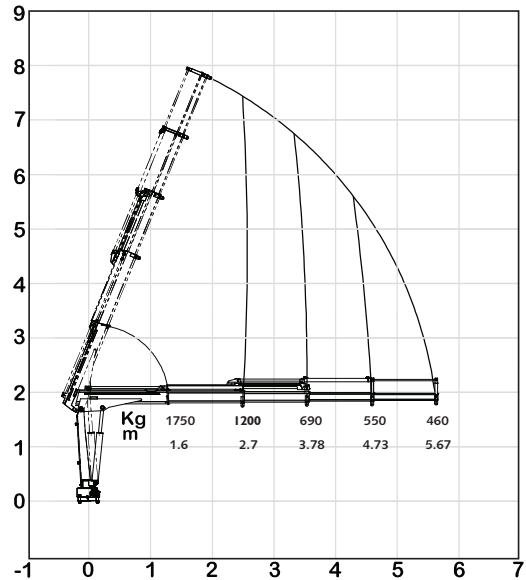
### 333 T2



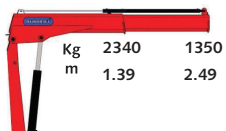
### 333 T3



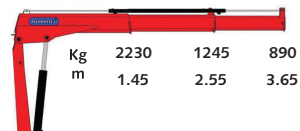
### 333 T4



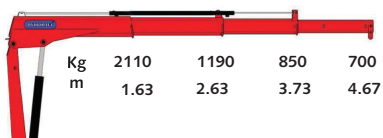
### 333 - T1



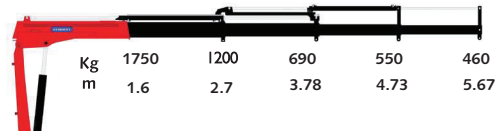
### 333 - T2



### 333 - T3

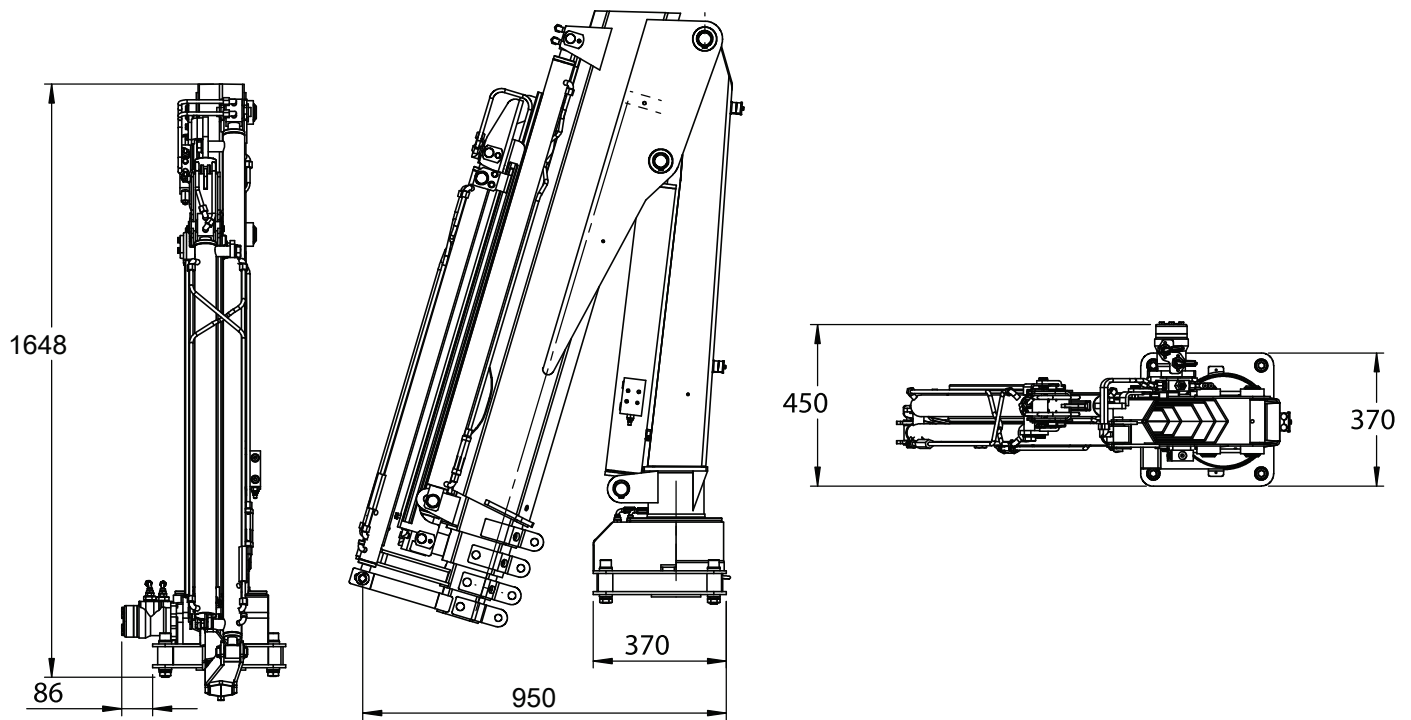


### 333 - T4





# CRANE 333

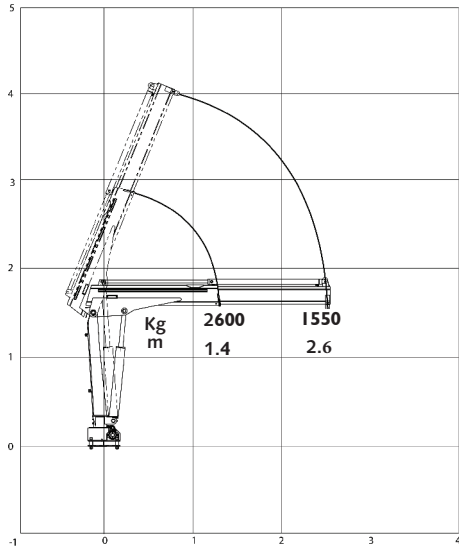


## SPECIFICATIONS

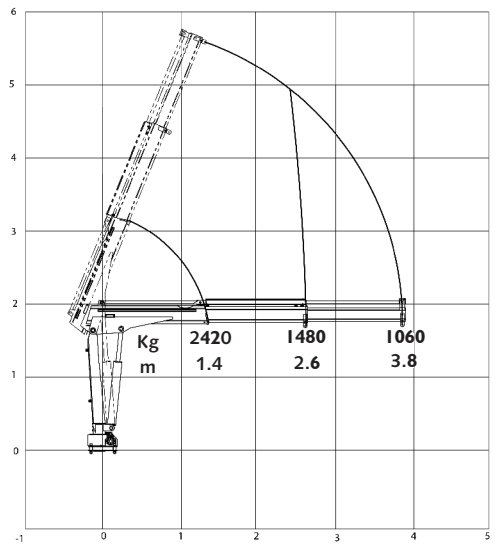
EN 12999	UNITS	T1	T2	T3	T4
Load Movement	tm	3.1	3.1	3.1	3.1
Hydraulic Reach	m	2.5	3.5	4.7	5.7
Load Lifting Capacity	kg-m	2340 @ 1.39 1350 @ 2.49	2230 @ 1.45 1245 @ 2.55 890 @ 3.65	2110 @ 1.63 1190 @ 2.63 850 @ 3.73 700 @ 4.67	1750 @ 1.6 1200 @ 2.7 690 @ 3.78 550 @ 4.73 460 @ 5.67
Slewing Angle	Degree (°)	340	340	340	340
Slewing Torque	kg-m	320	320	320	320
Height above Chassis when folded	mm	1648	1648	1648	1648
Width when folded	mm	450	450	450	450
Length when folded	mm	950	950	1030	1030
Stabilizer spread, Standard	mm	3200	3200	3200	3200
Stabilizer spread, Extra long	mm	4500	4500	4500	4500
Standard weight	kg	300	320	350	418
Working pressure	bar	230	230	230	230
Oil Flow	l/min	8	8	8	8
Oil Tank	Ltr	22	22	22	22

## LOAD CHART

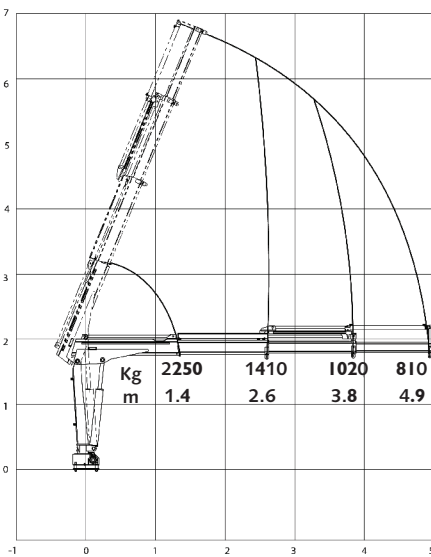
### 444 T1



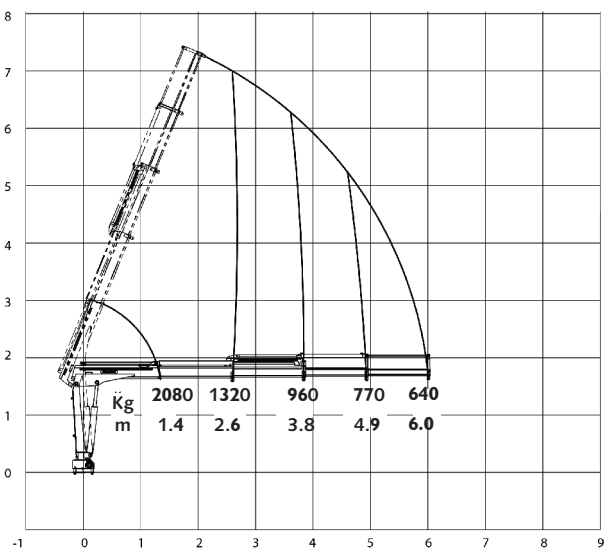
### 444 T2



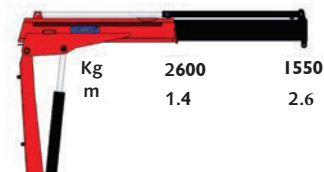
### 444 T3



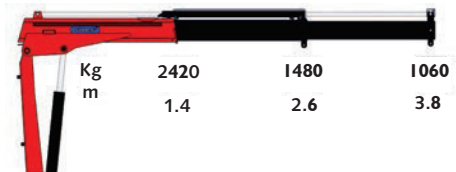
### 444 T4



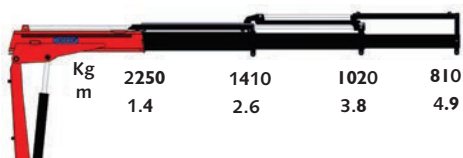
### 444 - T1



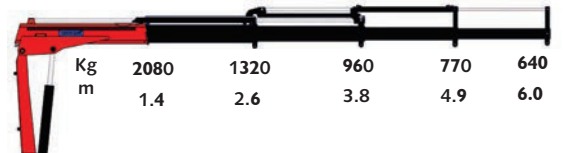
### 444 - T2



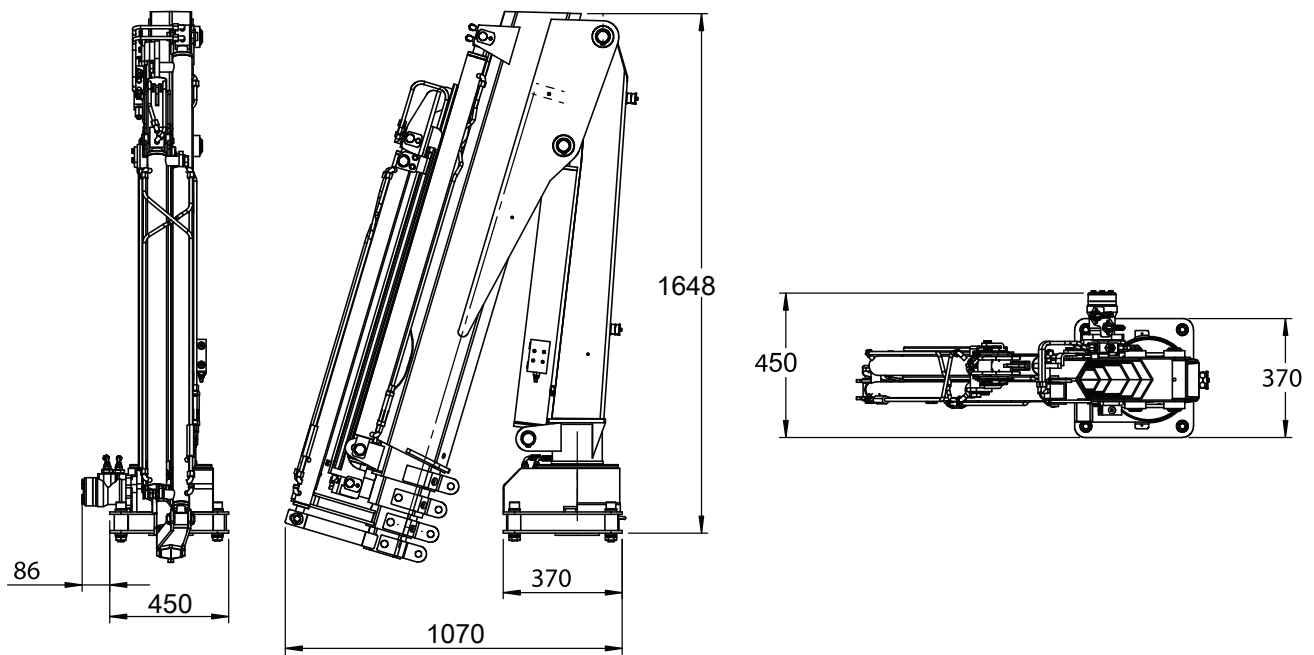
### 444 - T3



### 444 - T4

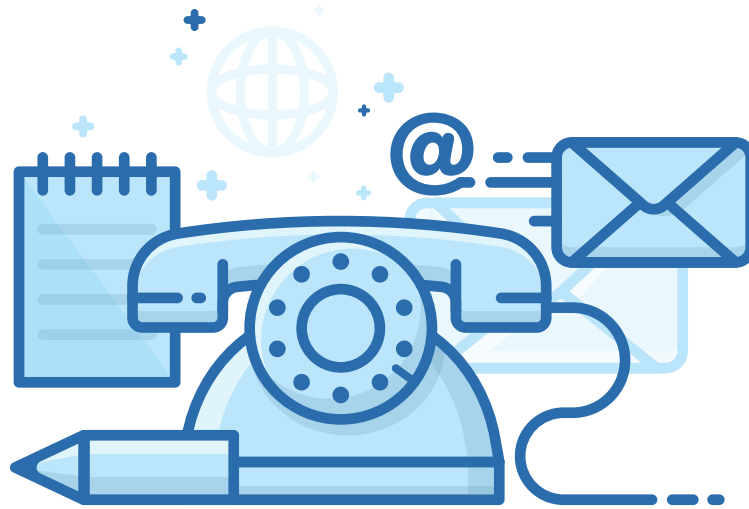


# CRANE 444



## SPECIFICATIONS

EN 12999	UNITS	T1	T2	T3	T4
Load Movement	tm	3.8	3.7	3.5	3.4
Hydraulic Reach	m	2.6	3.8	4.9	6.0
Load Lifting Capacity	kg-m	2600 @ 1.4 1550 @ 2.6	2420 @ 1.4 1480 @ 2.6 1060 @ 3.8	2250 @ 1.4 1410 @ 2.6 1020 @ 3.8 810 @ 4.9	2080 @ 1.4 1320 @ 2.6 960 @ 3.8 770 @ 4.9 640 @ 6.0
Slewing Angle	Degree (°)	340	340	340	340
Slewing Torque	kg-m	320	320	320	320
Height above Chassis when folded	mm	1648	1648	1648	1648
Width when folded	mm	449	449	449	449
Length when folded	mm	1180	1180	1180	1180
Stabilizer spread, Standard	mm	3200	3200	3200	3200
Stabilizer spread, Extra long	mm	4500	4500	4500	4500
Standard weight	kg	340	380	410	440
Working pressure	bar	230	230	230	230
Oil Flow	l/min	8	8	8	8
Oil Tank	Ltr	22	22	22	22



## CONTACT US

---

### HYDROLIFT CRANES PRIVATE LIMITED

Bldg. No. 322/2, Moje Kalote Mokashi, Old Mumbai - Pune Highway, Taluka: Khalapur,  
Dist.: Raigad, Maharashtra - 410 206, India | Email: [info@hydrolift.in](mailto:info@hydrolift.in)

**Dealer**