

HYDROLIFT™

BORN TO LIFT

TAIL LIFT

HLM 10-135 & HLM 10-150

HLM 15-135 & HLM 15-150



www.hydrolift.in

TECHNICAL SPECIFICATION

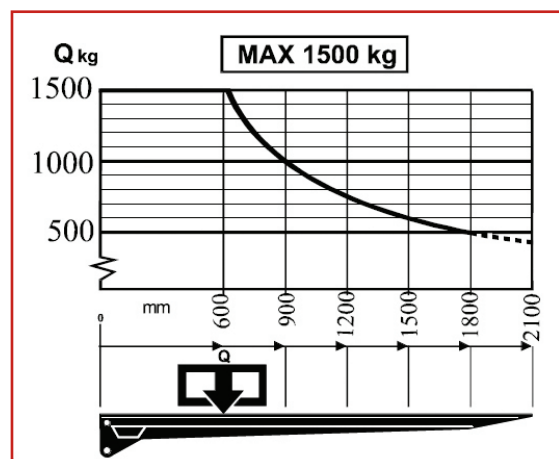
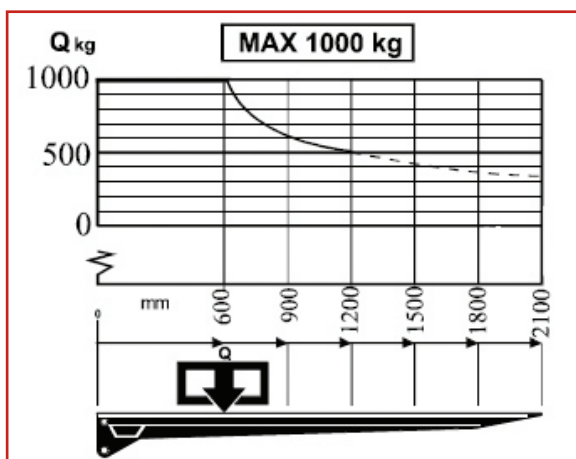
Model: HLM 10-135 & HLM 10-150

- Voltage: 12v or 24v
- Platform: Steel
- Lifting Cylinder: 2
- Tilting Cylinder: 1 or 2
- Load Centre of Gravity: 700mm
- Minimum Battery Capacity: 150Ah
- Powerpack: 1600 w/12v, 2200 w/24v
- Maximum Lifting Capacity: 1000 kg
- Maximum Lifting Height from Ground: 1200mm

Model: HLM 15-135 & HLM 15-150

- Voltage: 12V or 24V
- Platform: Steel
- Lifting Cylinder: 2
- Tilting Cylinder: 2
- Load Centre of Gravity: 700mm
- Minimum Battery Capacity: 150 Ah
- Powerpack: 1600 w/12v, 2200 w/24v
- Maximum Lifting Capacity: 1500 kg
- Maximum Lifting Height from Ground: 1500 mm

LOADING DIAGRAM



© Hydrolift Cranes Pvt. Ltd. Specifications and dimensions are subject to change without notice. Please verify before finalization.

HYDROLIFT CRANES PRIVATE LIMITED

Bldg. No. 322/2, Moje Kalote Mokashi, Old Mumbai - Pune Highway, Taluka: Khalapur,
Dist.: Raigad, Maharashtra - 410 206, India | Email: info@hydrolift.in

Dealer