

**HYDROLIFT**<sup>TM</sup>

**BORN TO LIFT**

**SKIP LOADER**

**MODEL**

**HTL100**

**HTL120**

**HTL140**

**HTL140D**



[www.hydrolift.in](http://www.hydrolift.in)

# SKIP LOADER

The Hydrolift Skip Loader is engineered and designed for handling industrial waste, building debris, household and hotel waste, scrap metal and even for STP slurry and crude waste.

The Skip Loaders are manufactured with different capacity suitable for vehicles starting from 7 ton to 40 ton GVW.

Optional: Bins can be supplied for varying capacity depending on the weight of the material with 4, 6, 7, 10, 12 and 14 cubic meters.

The model HTL140D is with double bins and telescopic arms and platform for facilitating easy loading and unloading for dual bins.

Bins can be supplied with open top or with cover to protect the environment and prevent contamination of the waste.



## STRUCTURE & FRAME

- High-quality tensile steel
- High-quality Pins and Bushes

## DESIGN FEATURES

- European technology and design, produced indigenously under 'Make in India' program
- High-quality branded components used in Skip Loaders
- Imported valves are used in these Skips

## WEATHER PROTECTION

- Zinc enriched primer for superior rust prevention
- Superior polyurethane paint
- Standard colour RAL 9010
- Option - Other colours on customer request at extra cost



# SKIP LOADER

## TECHNICAL SPECIFICATIONS

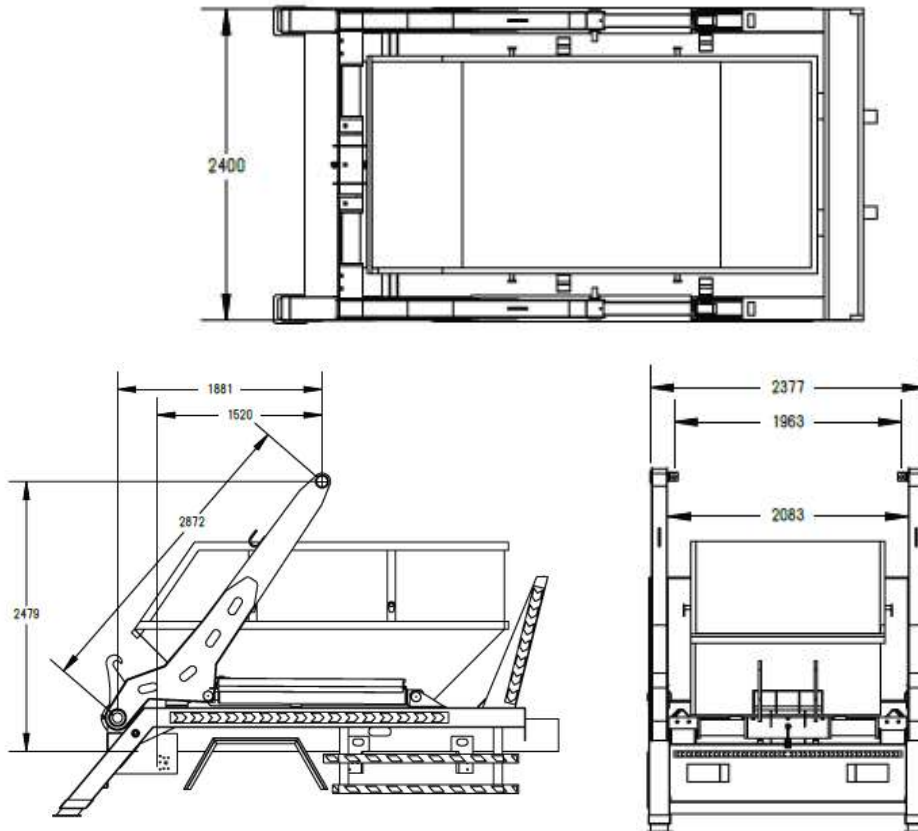
Details	HTL 100	HTL 120	HTL 140	HTL 140D
GVW	9-10 ton	12-15 ton	15-18 ton	18 to 26 ton
Capacity	10 ton	12 ton	14 ton	2 x 10 ton
Platform Ext.	200-900mm	300-1000mm	300-1000mm	N/A
Platform Size	3900mm	3900mm	3900mm	7300mm Telescopic
Recommended Wheelbase	3500 - 3800mm	3500 -4100mm	3900 - 4500mm	6000 -6500mm
Weight (without bin)	2500 Kg	2900 Kg	3500 Kg	4900 Kg
Working Pressure	250 bar	270 bar	270 bar	270 bar
Tank Capacity	80L	80L	120L	120L
Oil Flow	40-50lpm	40-50lpm	50-60lpm	80lpm

The specifications are subject to change without prior notice.

Disclaimer: The dimensions and weights are theoretical and may vary in actual production

## DIMENSIONS:

HTL-100/HTL-120

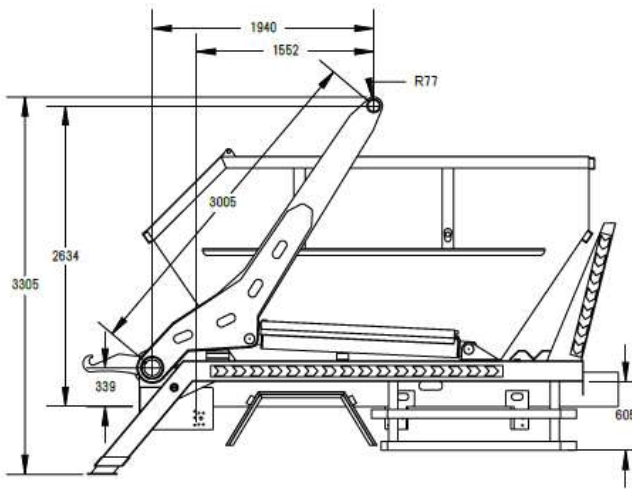
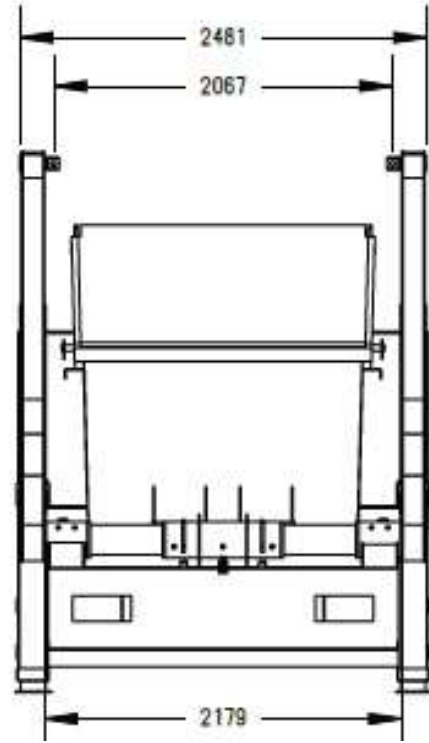
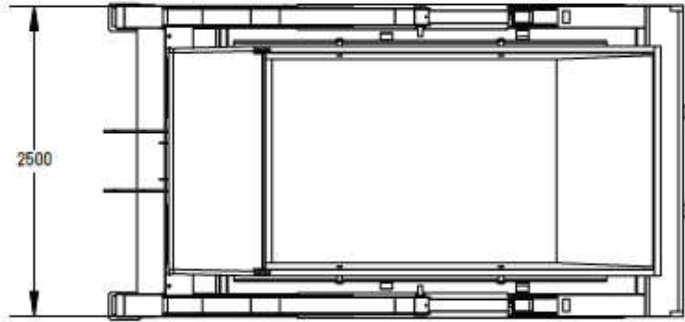


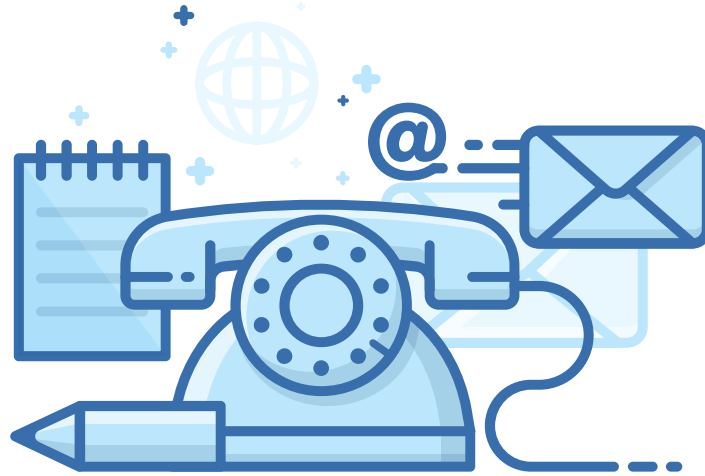


# SKIP LOADER



## DIMENSIONS:

HTL-140





## For more information contact:

 +91-99207 85464 | +91-89284 46182  
 [sales@hydrolift.in](mailto:sales@hydrolift.in)

# CONTACT US

---

### HYDROLIFT CRANES PRIVATE LIMITED

Bldg. No. 322/2, Moje Kalote Mokashi, Old Mumbai - Pune Highway, Taluka: Khalapur,  
Dist.: Raigad, Maharashtra - 410 206, India | Email: [info@hydrolift.in](mailto:info@hydrolift.in)

**Dealer**