

# HYDROLIFT™

BORN TO LIFT

CRANE MODEL

## 1875



[www.hydrolift.in](http://www.hydrolift.in)

# CRANE 1875

## STRUCTURE AND FRAME

- High tensile grade steel
- High-quality steel pins and bushes

## WEATHER PROTECTION

- Zinc enriched primer for superior rust prevention
- Superior polyurethane paint
- Standard color RAL 3002
- Option - Other colors on customer request

## DESIGN FEATURES

- European technology and design, produced in India under Make in India program
- High-quality branded components used in cranes

## SAFETY AND CONTROLS

- Cranes with **Hx** are standard cranes with no additional features
- Cranes with **HPS** have additional electro-hydraulic safety features fitted with safe overload protection
- Cranes with **HPro** are installed with radio remote controls for safe remote operations
- Cranes with **HPro+** are installed with electro-hydraulic safety, radio remote control and Intelligent Monitoring System along with Crane diagnostics

## HYDRAULIC POWER

- High pressure hydraulic gear pump
- Working pressure 315 bar

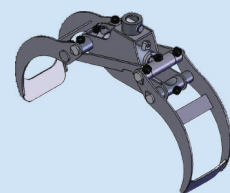
## ATTACHMENTS



AUGER



POLYGRAB



LOG GRAB



WINCH



MAN BASKET



BRICK BLOCK CLAMP

## OPTIONS



RADIO REMOTE



OIL COOLER



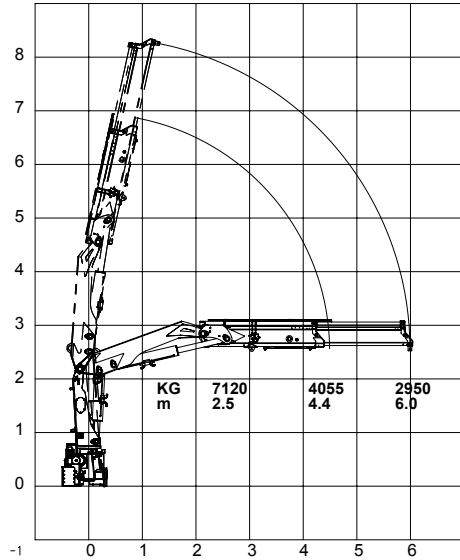
EXTRA STABILIZER



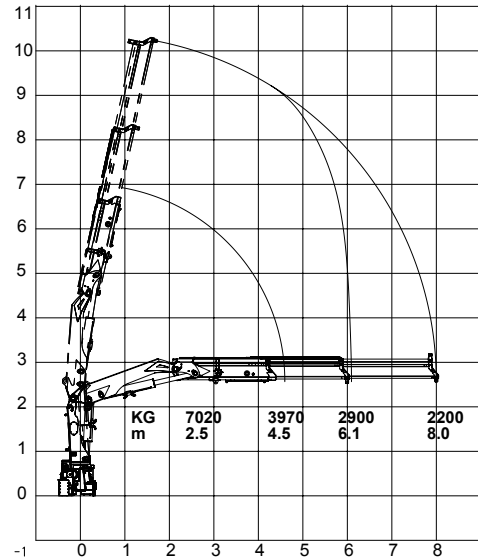
TOP SEAT

## LOAD CHART

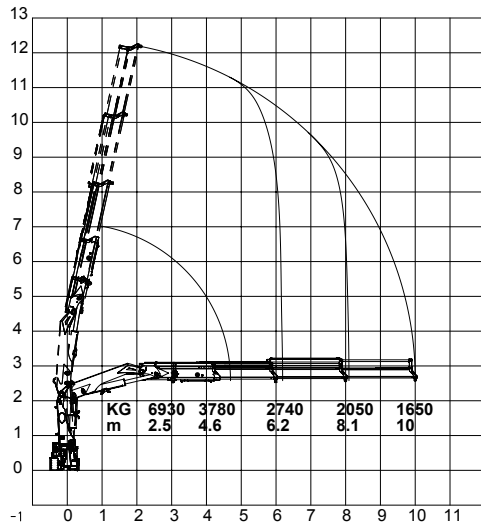
### 1875 K1



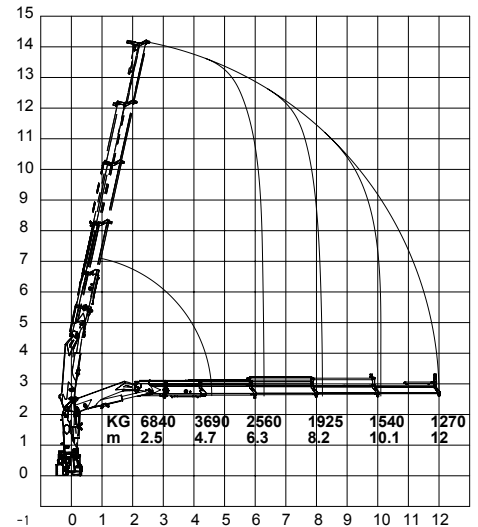
### 1875 K2



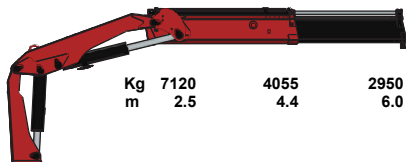
### 1875 K3



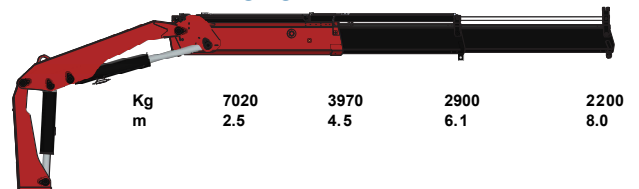
### 1875 K4



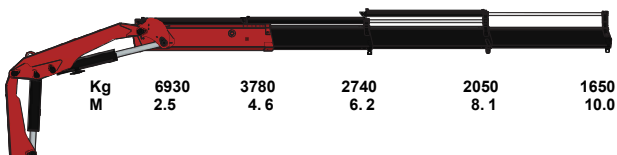
### 1875 - K1



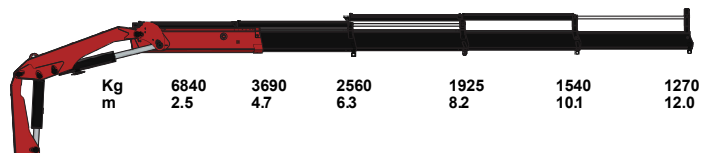
### 1875 - K2



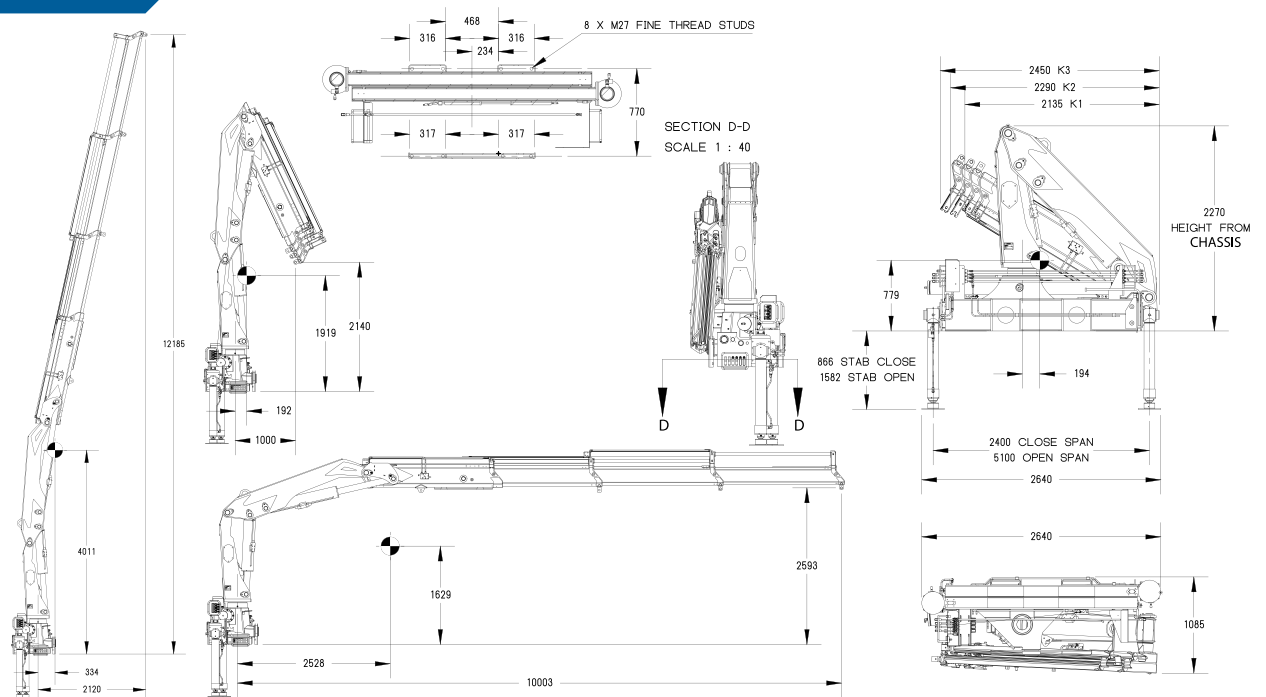
### 1875 - K3



### 1875 - K4



# CRANE 1875



## SPECIFICATIONS

EN 12999	UNITS	K1	K2	K3	K4
Load Movement	tm	17.8	17.5	17.3	17.1
Hydraulic Reach	m	6.0	8.0	10.0	12.0
Load Lifting Capacity	kg-m	7120 @ 2.5 4055 @ 4.4 2950 @ 6.0	7020 @ 2.5 3970 @ 4.5 2900 @ 6.1 2200 @ 8.0	6930 @ 2.5 3780 @ 4.6 2740 @ 6.2 2050 @ 8.1 1650 @ 10.0	6840 @ 2.5 3690 @ 4.7 2560 @ 6.3 1925 @ 8.2 1540 @ 10.1 1270 @ 12.0
Slewing Angle	Degree (°)	400	400	400	400
Slewing Torque	kg-m	2405	2405	2405	2405
Height above Chassis when folded	mm	2203	2203	2203	2203
Width when folded	mm	1014	1014	1014	1014
Stabilizer spread, Standard	mm	5100	5100	5100	5100
Standard weight	kg	2050	2250	2410	2530
Working pressure	bar	300	300	300	300
Oil Flow	l/min	47	47	47	47
Oil Tank	Ltr	120	120	120	120

© Hydrolift Cranes Pvt. Ltd. Specifications and dimensions are subject to change without notice. Please verify before finalization.

### HYDROLIFT CRANES PRIVATE LIMITED

Bldg. No. 322/2, Moje Kalote Mokashi, Old Mumbai - Pune Highway, Taluka: Khalapur,  
Dist.: Raigad, Maharashtra - 410 206, India | Email: sales@hydrolift.in

**Dealer**