

# HYDROLIFT™

BORN TO LIFT

CRANE MODEL  
**2075**



SAFETY  
**Hx**

SAFETY  
**HPS**  
Inside

SAFETY  
**HPro**  
REMOTE

SAFETY  
**HPro+**  
EMS



[www.hydrolift.in](http://www.hydrolift.in)

# CRANE 2075

## STRUCTURE AND FRAME

- High tensile grade steel
- High-quality steel pins and bushes

## WEATHER PROTECTION

- Zinc enriched primer for superior rust prevention
- Superior polyurethane paint
- Standard color RAL 3002
- Option - Other colors on customer request

## DESIGN FEATURES

- European technology and design, produced in India under Make in India program
- High-quality branded components used in cranes

## SAFETY AND CONTROLS

- Cranes with **Hx** are standard cranes with no additional features
- Cranes with **HPS** have additional electro-hydraulic safety features fitted with safe overload protection
- Cranes with **HPro** are installed with radio remote controls for safe remote operations
- Cranes with **HPro+** are installed with electro-hydraulic safety, radio remote control and Intelligent Monitoring System along with Crane diagnostics

## HYDRAULIC POWER

- High pressure hydraulic gear pump
- Working pressure 315 bar

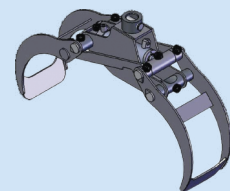
## ATTACHMENTS



AUGER



POLYGRAB



LOG GRAB



WINCH



MAN BASKET



BRICK BLOCK CLAMP

## OPTIONS



RADIO REMOTE



OIL COOLER



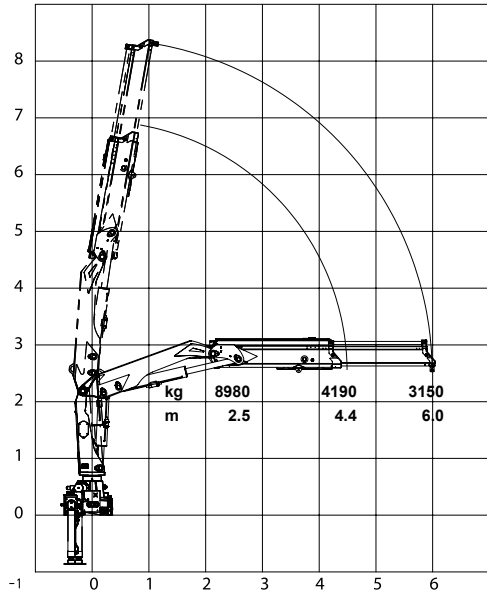
EXTRA STABILIZER



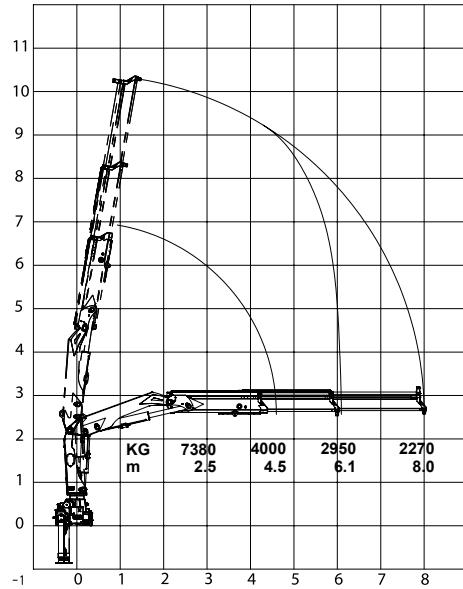
TOP SEAT

## LOAD CHART

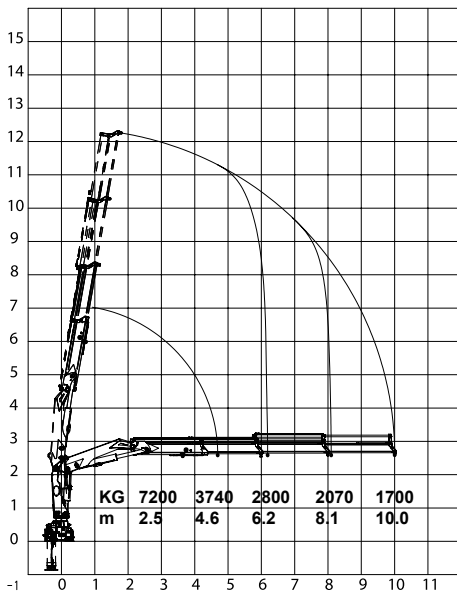
**2075 K1**



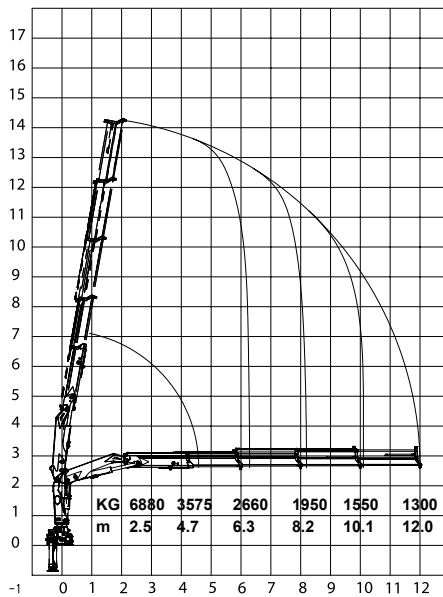
**2075 K2**



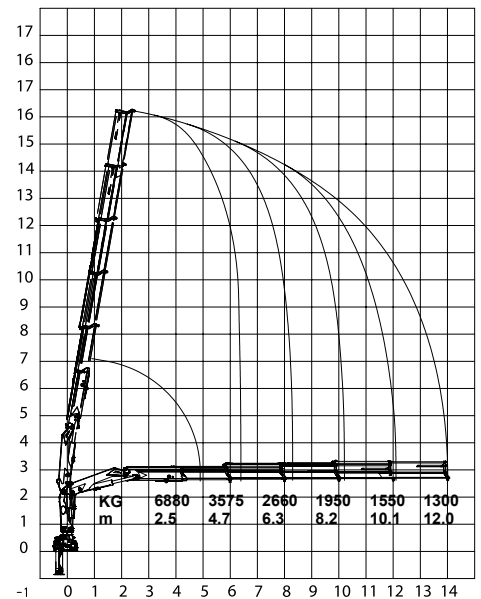
**2075 K3**



**2075 K4**

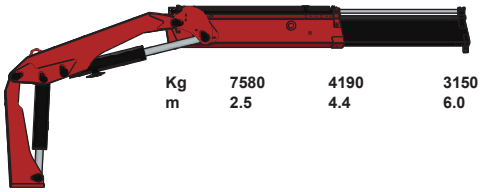


**2075 K5**



# CRANE 2075

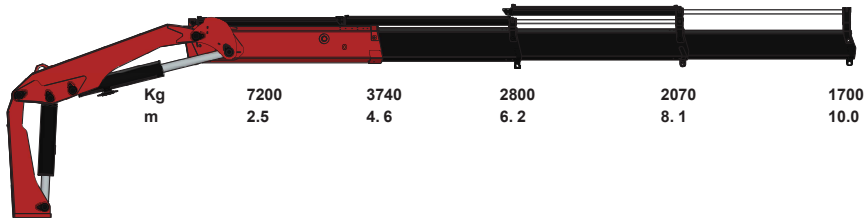
## 2075 - K1



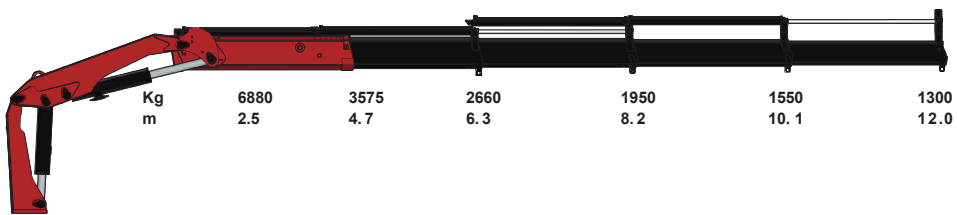
## 2075 - K2



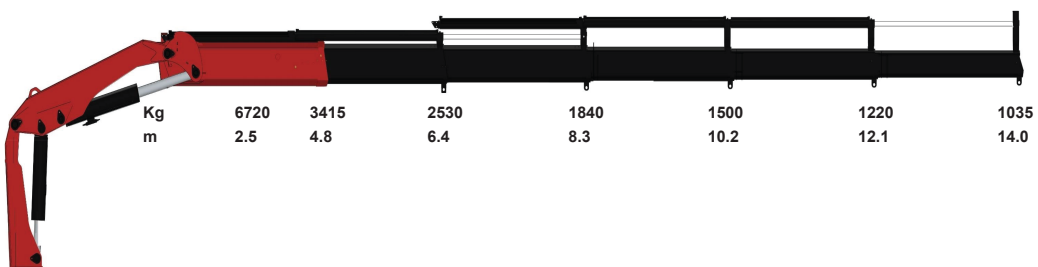
## 2075 - K3



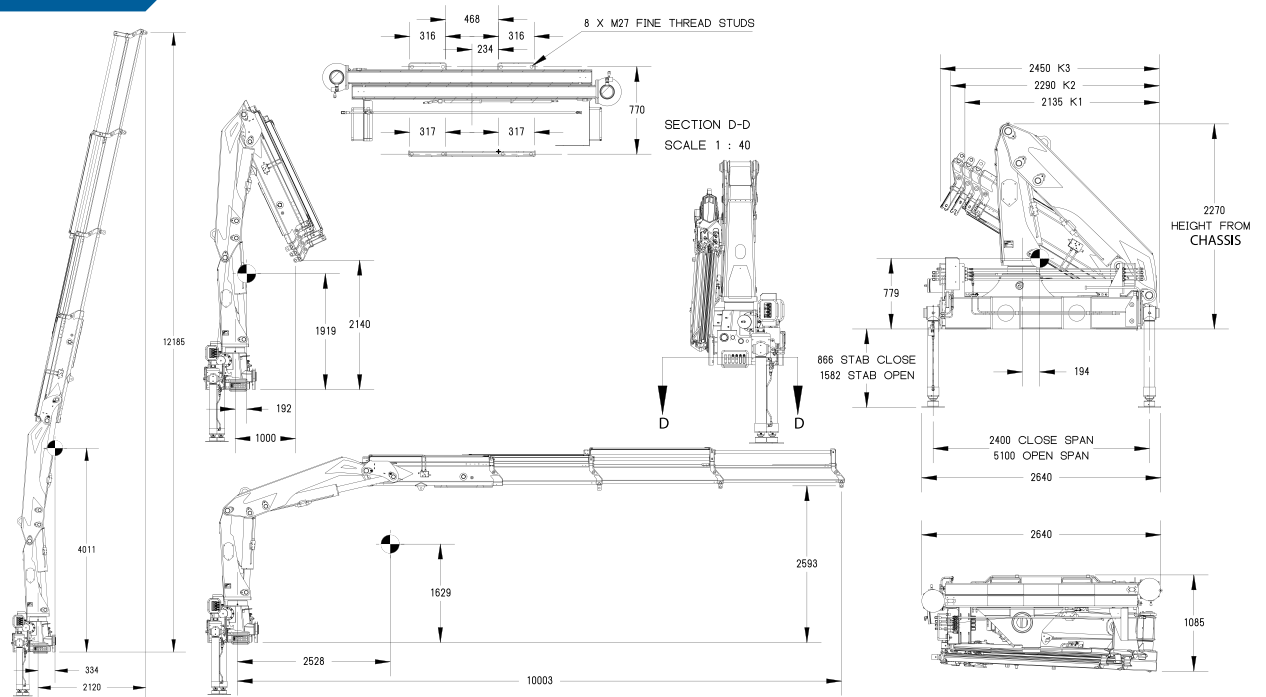
## 2075 - K4



## 2075 - K5



# CRANE 2075



## SPECIFICATIONS

EN12999	UNITS	K1	K2	K3	K4	K5
Load Movement	tm	18.9	18.4	18	17.2	16.8
Hydraulic Reach	m	6.0	8.0	10.0	12.0	12.0
Load Lifting Capacity	Kg-m	8980 @ 2.5	7380 @ 2.5	7200 @ 2.5	6880 @ 2.5	6880 @ 2.5
		4190 @ 4.4	4000 @ 4.5	3740 @ 4.6	3575 @ 4.7	3575 @ 4.7
		3150 @ 6.0	2950 @ 6.1	2800 @ 6.2	2660 @ 6.3	2660 @ 6.3
			2270 @ 8.0	2070 @ 8.1	1950 @ 8.2	1950 @ 8.2
			1700 @ 10.0	1550 @ 10.1	1550 @ 10.1	
				1300 @ 12.0	1300 @ 12.0	
Slewing Angle	Degree (°)	400	400	400	400	400
Slewing Torque	Kg-m	2405	2405	2405	2405	2405
Height above Chassis when folded	mm	2305	2305	2305	2305	2305
Width when folded	mm	1148	1148	1148	1148	1148
Stabilizer spread, Standard	mm	5100	5100	5100	5100	5100
Standard weight	Kg	2350	2550	2710	2830	2960
Working pressure	bar	290	290	290	290	290
Oil Flow	l/min	47	47	47	47	47
Oil Tank	Ltr	140	140	140	140	140

© Hydrolift Cranes Pvt. Ltd. Specifications and dimensions are subject to change without notice. Please verify before finalization.

### HYDROLIFT CRANES PRIVATE LIMITED

Bldg. No. 322/2, Moje Kalote, Mokashi, Old Mumbai - Pune Highway, Taluka: Khalapur,  
Dist. Raigad, Maharashtra - 410 206, India | Email: sales@hydrolift.in

Dealer: