

# HYDROLIFT™

BORN TO LIFT

CRANE MODEL

## 2475



SAFETY

## Hx

SAFETY

## HPS

Inside

SAFETY

## HPPro

REMOTE

SAFETY

## HPPro<sup>+</sup>

EMS

[www.hydrolift.in](http://www.hydrolift.in)

# CRANE 2475

## STRUCTURE AND FRAME

- High tensile grade steel
- High-quality steel pins and bushes

## WEATHER PROTECTION

- Zinc enriched primer for superior rust prevention
- Superior polyurethane paint
- Standard color RAL 3002
- Option - Other colors on customer request

## DESIGN FEATURES

- European technology and design, produced in India under Make in India program
- High-quality branded components used in cranes

## SAFETY AND CONTROLS

- Cranes with **Hx** are standard cranes with no additional features
- Cranes with **HPS** have additional electro-hydraulic safety features fitted with safe overload protection
- Cranes with **HPro** are installed with radio remote controls for safe remote operations
- Cranes with **HPro+** are installed with electro-hydraulic safety, radio remote control and Intelligent Monitoring System along with Crane diagnostics

## HYDRAULIC POWER

- High pressure hydraulic gear pump
- Working pressure 315 bar

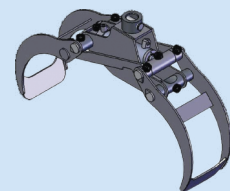
## ATTACHMENTS



AUGER



POLYGRAB



LOG GRAB



WINCH



MAN BASKET



BRICK BLOCK CLAMP

## OPTIONS



RADIO REMOTE



OIL COOLER



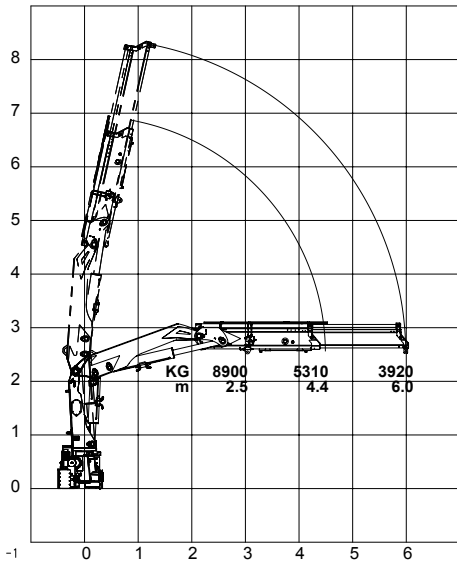
EXTRA STABILIZER



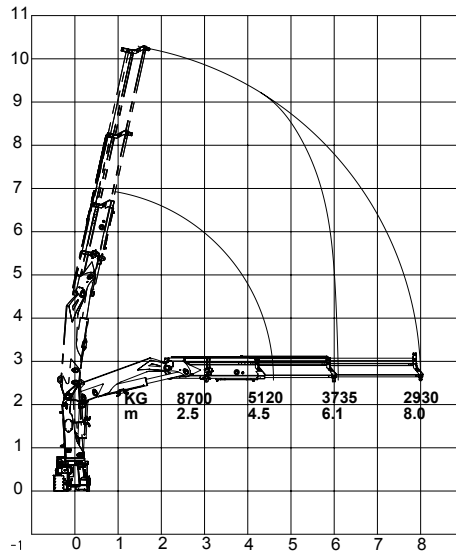
TOP SEAT

## LOAD CHART

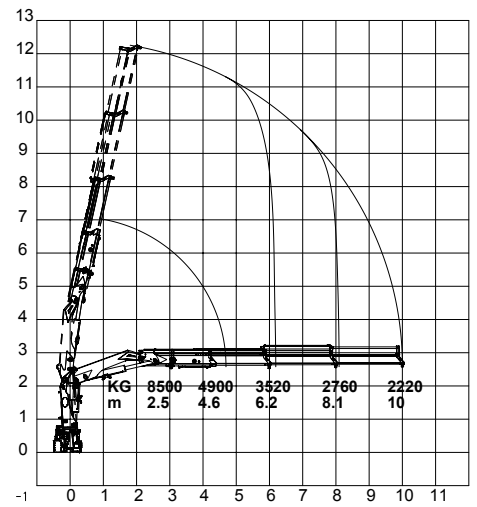
**2475 K1**



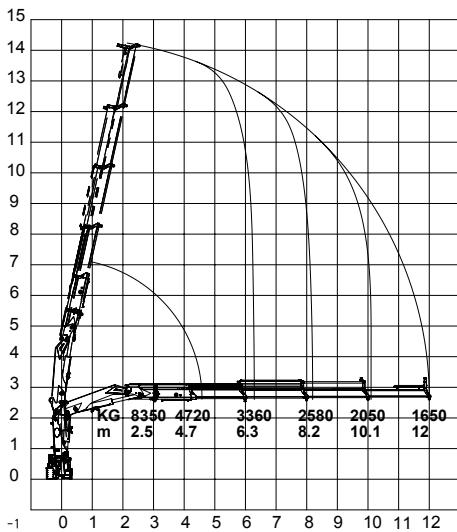
**2475 K2**



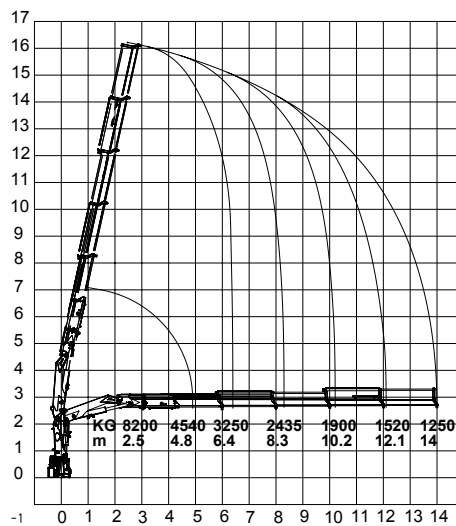
**2475 K3**



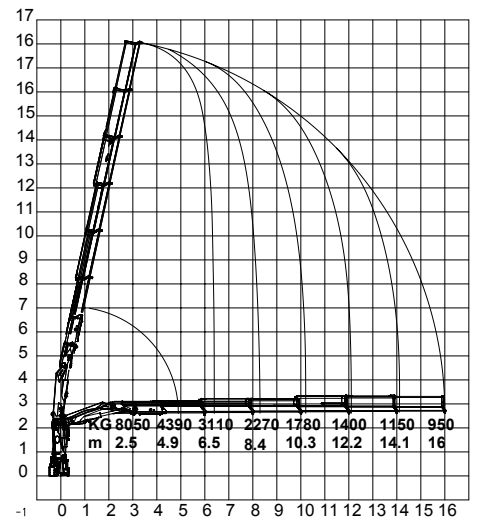
**2475 K4**



**2475 K5**

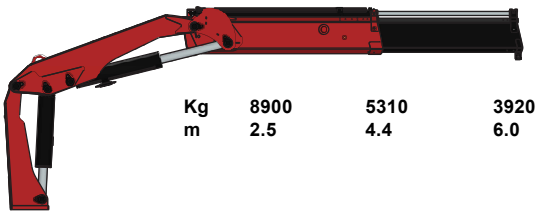


**2475 K6**

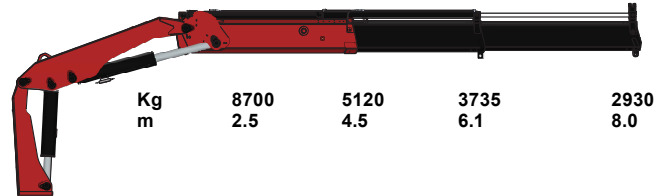


# CRANE 2475

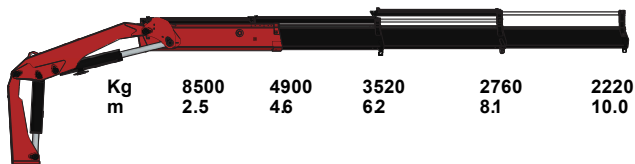
## 2475 - K1



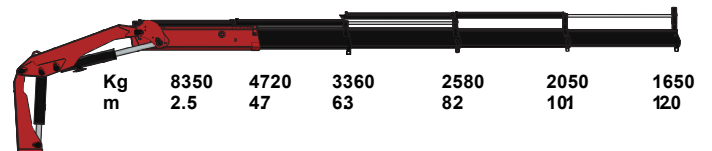
## 2475 - K2



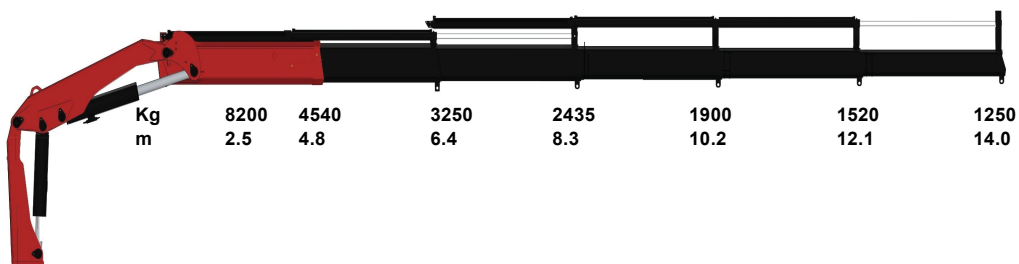
## 2475 - K3



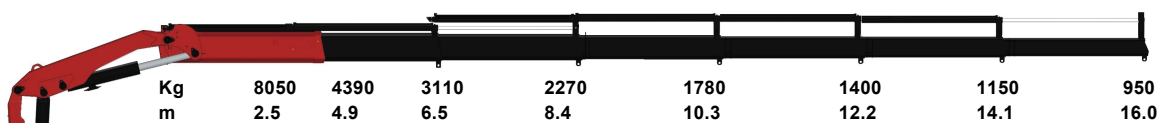
## 2475 - K4



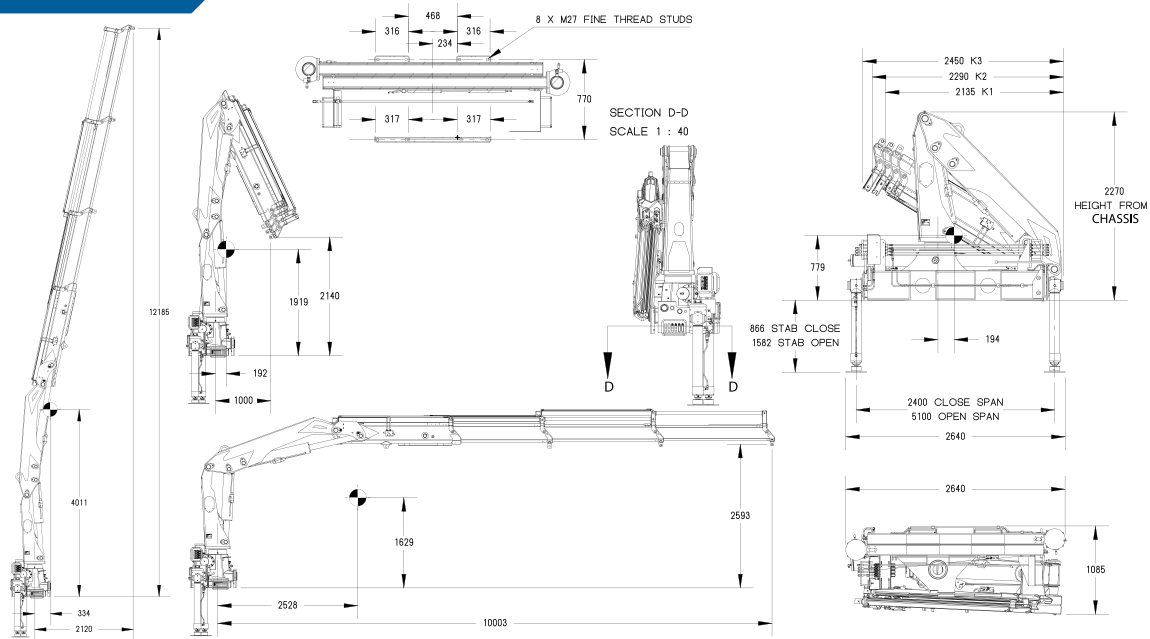
## 2475 - K5



## 2475 - K6



# CRANE 2475



## SPECIFICATIONS

EN12999	UNITS	K1	K2	K3	K4	K5	K6
Load Movement	tm	22.2	21.7	21.2	20.8	20.5	20.1
Hydraulic Reach	m	6.0	8.0	10.0	12.0	14.0	16.0
Load Lifting Capacity	Kg-m	8900 @ 2.5 5310 @ 4.4 3920 @ 6.0	8700 @ 2.5 5120 @ 4.5 3735 @ 6.1 2930 @ 8.0	8500 @ 2.5 4900 @ 4.6 3520 @ 6.2 2760 @ 8.1 2220 @ 10.0	8350 @ 2.5 4720 @ 4.7 3360 @ 6.3 2580 @ 8.2 2050 @ 10.1 1650 @ 12.0	8200 @ 2.5 4540 @ 4.8 3250 @ 6.4 2435 @ 8.3 1900 @ 10.2 1520 @ 12.1 1250 @ 14.0	8050 @ 2.5 4390 @ 4.9 3110 @ 6.5 2270 @ 8.4 1780 @ 10.3 1400 @ 12.2 1150 @ 14.1 950 @ 16.0
Slewing Angle	Degree (°)	400	400	400	400	400	400
Slewing Torque	Kg-m	2800	2800	2800	2800	2800	2800
Height above Chassis when folded	mm	2305	2305	2305	2305	2305	2305
Width when folded	mm	1152	1152	1152	1152	1152	1152
Stabilizer spread, Standard	mm	5100	5100	5100	5100	5100	5100
Standard weight	Kg	2920	3080	3200	3330	3420	3420
Working pressure	bar	300	300	300	300	300	300
Oil Flow	l/min	60	60	60	60	60	60
Oil Tank	Ltr	160	160	160	160	160	160

© Hydrolift Cranes Pvt. Ltd. Specifications and dimensions are subject to change without notice. Please verify before finalization.

### HYDROLIFT CRANES PRIVATE LIMITED

Bldg. No. 322/2, Moje Kalote, Mokashi, Old Mumbai - Pune Highway, Taluka: Khalapur,  
Dist. Raigad, Maharashtra - 410 206, India | Email: sales@hydrolift.in

Dealer: